



Email: info@ScienzaInfiore.it - PEC: amministrazione@pec.scienzaifiore.it

# TECHNICAL REPORT

**Client** Widora International S.r.l.  
**Sample receipt date** 08/12/2022  
**Processing date** 08/22/2022  
**Internal reference code** WID1208.1  
**Analytical Method** HPLC - HS - Rev.2  
**Lot** #01RC22-PRP04

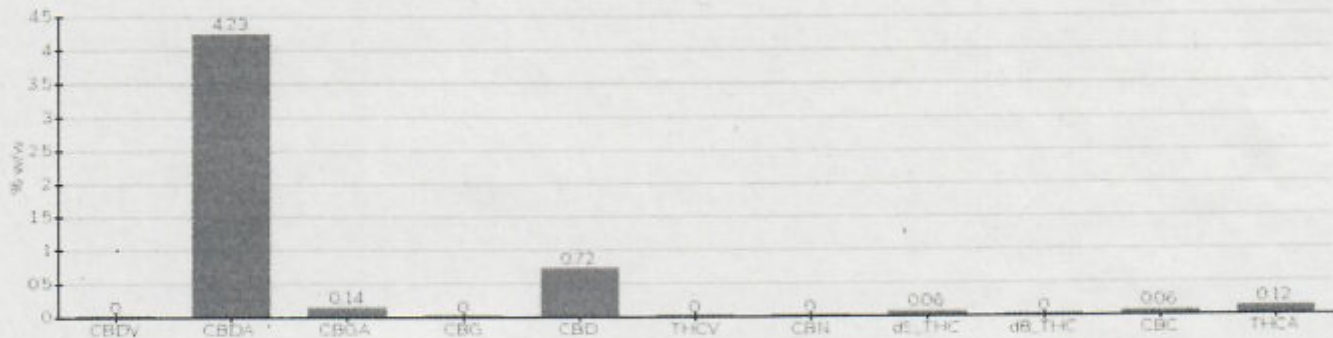
**Sample name** Purple  
**Sample type** infiorescenza  
**Variety** NA  
**Seeds number / Lot** NA  
**Sampling method** By Custome

**Note**

SAMPLE ANALYZED: NA(3.00gr)



Analyte	% w/w	Method
CBDV	<0.01%	HPLC-UV
CBDA	4.23%	HPLC-UV
CBGA	0.14%	HPLC-UV
CBG	<0.01%	HPLC-UV
CBD	0.72%	HPLC-UV
THCV	<0.01%	HPLC-UV
CBN	<0.01%	HPLC-UV
d9_THC	0.06%	HPLC-UV
d8_THC	<0.01%	HPLC-UV
CBC	0.06%	HPLC-UV
THCA	0.12%	HPLC-UV
<b>TOTAL CBD</b>	<b>4.43%</b>	<b>CALCULATED</b>
<b>TOTAL CBG</b>	<b>0.12%</b>	<b>CALCULATED</b>
<b>TOTAL THC</b>	<b>0.17%</b>	<b>CALCULATED</b>



Pineto

08/22/2022